



# Cashew Processing Machinery



**GI AGRO TECHNOLOGIES PVT LTD**



Design



Develop



Deliver

## Company Overview

GI AGRO TECHNOLOGIES PVT LTD, Chennai established in 1994 to Design, Develop and manufacturing of food Processing machinery by two young professional with a passion to excel in the industry.

Our team of professionals consists of highly talented cross functional experts to offer technically advanced machineries with lower operating cost and ease of maintenance.

Robust in-house R & D team help us to design and develop customized solution to unique and specific needs of every customer. With end-to-end automation in cashew processing, we have set a benchmark for the Global industry.

The excellent performance of our machines has made the cashew processing industry around the world to look up to us for technology up- gradation from time to time.

As part of our continuous growth plan, we have introduced Artificial Intelligent into RGB Color grading and sorting towards technology upgrade.

### PROJECT CONSULTANCY

- Single window service for establishing cashew processing plant
- Plant layout & Turnkey project consultancy
- Project customized and update version to Customer's vision, resources and budget





## RAW CASHEW NUT CLEANING, DE-STONING & BAGGING SYSTEM

- Wet & dry de-stoning systems with automatic weighing, bag filling and stitching.
- Nominal Capacity 4 to 6 MT per hour

## RCN STEAM ROASTING SYSTEM

- steam cookers are available in various capacities to suit the process requirement.
- Mechanized feeding system to feed the cooker.
- The output is conveyed through conveyers to cooling silos.
- Nominal capacity 320 Kg, 1000 Kg, & 2000 Kg per hour



## RCN SIZING SYSTEM

- The RCN sized to the below industrial standards
  - A - 24mm to 26mm
  - B - 22mm to 24mm
  - C - 20mm to 22mm
  - D - 18mm to 20 mm
- Nominal capacity 1000 to 10,000 Kgs/hr





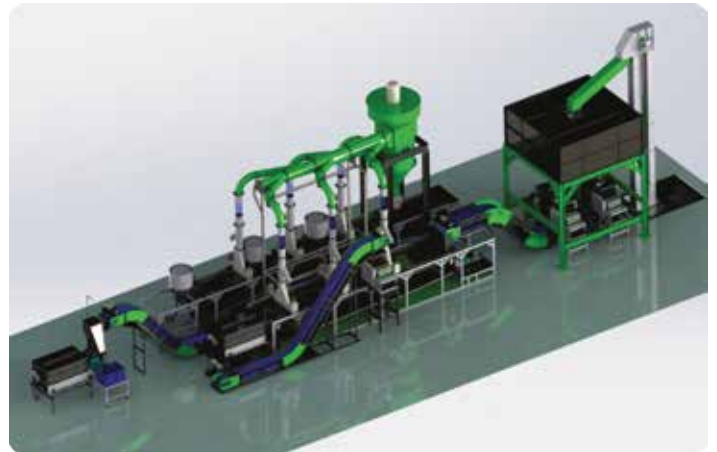


## RCN SHELLING SYSTEM

- Mechanized shelling line upto scooping
- Automatic shelling system capacity from 4 MT to 100 MT per shift
- Nominal capacity 300,600,1200 & 2000 kg per hour

## RCN SHELLING SYSTEM

- 2000 kg per hour
- Reduced man power
- Minimum uncut percentage
- Minimum pieces percentage



## CASHEW KERNEL DRYING SYSTEM

- Drying temperature & time duration are controlled by digital controllers for high accuracy
- Design to Maintain uniform temperature
- The heating modes are Electrical, Steam, LPG, Biomass - Agro waste or RCN shell cake
- Nominal capacity 250 kg, 500 kg , 1000 kg & 2000 kg per batch



## KERNEL PEELING SYSTEM

- Pneumatic air peeling system
- Super calibrator for whole kernels and pieces separation
- High peeling percentage
- Low pieces generation
- Nominal capacity 300 kg to 2000 kg/hr



## DICING SYSTEM

- Cashew Kernel dicing machine - 4,6 & 8 mm
- Nominal capacity 100 kg to 500 kg per hour

## CASHEW KERNEL PIECES SIZING SYSTEM

- Cashew Kernel pieces size grading machine into split LWP & BB
- Nominal capacity 100 kg to 500 kg per hour



## Ai – MULTI FUNCTIONAL COLOR SORTER

- Ultra- High Integration for Greater Efficiency.
- One- piece Moulding, Compact Structure, Convenient and Practical. Mini Size & High Performance.
- Intelligent Algorithms: Efficient Operation and More Accurate Recognition.
- Standard Modular Hardware Platform: More High Stability, Low Failure Rate.
- Pure Sorting Performance: Ultra-High Sorting Rate, Ultra- Low Carry-Out.
- Expandable & Compatible Design: Expandable 3- lens structure, Compatible with 4- lens algorithm



Model	Throughput (T/H)	Carryover Rate (Bad:Good)	Grading Accuracy	Voltage (V/Hz)	Power (Kw)	Weight (Kg)	Dimension (mm)
GIAT- 64CG	0.4-0.6	>10:1	≥99.9%	220/50	1	280	971*1656*1536
GIAT- 128CG	0.9-1.2	>10:1	≥99.9%	220/50	1.5	650	1944*1647*1536

## Ai – BELT COLOR SORTER



- High- Speed belt type design structure for significantly increased capacity
- Standard modular hardware platform for high stability & low failure rate.
- New intelligent algorithms & communication architecture for easier operation.
- Extra wide angle your four View lenses: Inspect 360° with no dead angle, identify defects that have nowhere to hide
- New shadow – less Light path design: Identify the small Colour difference of the material.
- Intelligent wind curtain dust removal system: Solve the problem of broken skin and dust infection and minimize material breakage

Model	Throughput (T/H)	Carryover Rate (Bad:Good)	Grading Accuracy	Voltage (V/Hz)	Power (Kw)	Weight (Kg)	Dimension (mm)
GIAT- 64K	0.4-0.6	>50:1	≥99.9%	380/50	2.5	860	3469*1106*1533
GIAT- 128K	0.9-1.2	>50:1	≥99.9%	380/50	2.9	980	3158*1406*1816
GIAT-256KFS	1.8-2.2	>50:1	≥99.9%	380/50	8.1	1890	3639*2090*2180

## Packing System

### PRE - PACKING INSPECTION SYSTEM

- Visual inspection before the final packing
- Detects & removes foreign matter contamination
- Removes dust & lighter than air particles
- Facilitates manual inspection



### AUTOMATIC POUCH PACKING SYSTEM

- Automatic weigh fill and seal pouch packing system
- Vacuumizes and fills Carbon dioxide and Nitrogen gas & seals the pouch for longer shelf life

### POUCH PACKING MACHINE

- Packs 25 lbs & 50 lbs pouches
- Vacuumizes and fills Carbon dioxide and Nitrogen gas & seals the pouch for longer shelf life





# Artificial Intelligence Cashew Kernel Grading Machine



## Features

- Ai deep learning, High computing platform
- Remote control, update online
- High sorting accuracy, low grading errors
- Multi authority, interface friendly
- 360° Rotate, defects captured no dead angle
- Intelligent dashing, automatic water washing rollers
- Multi exits, setting free
- Automatically collect data and generate production reports

Model	Channel	Exits	Grading Accuracy	Loss Rate	I/P Power Supply	Power (Kw)	Air Pressure	Air Consume	Capacity/Hr
6GFDC-A-6	6	8	99%	<1%	380V/ 50Hz	9.45kw	≥0.4Mpa	≥1.5M <sup>3</sup> /Min	380-400Kg

## GI AGRO TECHNOLOGIES PVT. LTD.

# 33, Self Help Industrial Estate, Baliga Road,  
Keelkattalai, Chennai - 600117, India.

Tel: 91 44 6672 7200 to 99

Email : info@giagrotech.com

www.giagrotech.com | www.cashewmachines.com

